

REGULATOR PRESSURE GAUGE STANDARD EN 562 DN 40, 50 & 63

REGULATOR PRESSURE GAUGE STANDAR EN 562 DN 40, 50 & 63

Usable with liquid or gaseous fluids that do not attack chemically the alloys of copper, do not present a high stickiness and do not crystallize.

The preferable application is in pressure regulators. They comply with the EC Standards.

Constructive and functional characteristics:

Accuracy:

Ø40: 2.5% according to EN 837-1.

Ø50 and Ø63: 1,6% according to EN 837-1.

Ranges: -1..0 to 0..40 bar for DN 40 and 50, -1..0 to 0..400 bar for DN 63 or any other equivalent unit of pressure or vacuum, standard ranges according to DIN 16 128

Ambient temperature: -20...+60°C.

Process fluid temperature: Max. +60°C.

Temperature error:

Additional error when the temperature of the pressure element deviates from 20°C. +/-0,3% every 10 °C of change.

Working pressure:

Maximum. 75% of E.S.

Temporary overpressure: Not applicable.

Process connection: In brass.

Tubular spring:

Phosphoric bronze. In "C" for ≥ 40 bar scales. In spiral for >40 bar scales.

Case: In golden finished steel or black painted with back blow out.

Window: in transparent plastic

Movement: in brass

Pointer: Painted black aluminium.

Other options:

Tin-silver welding.

Glass window.

Other accuracy ranges.

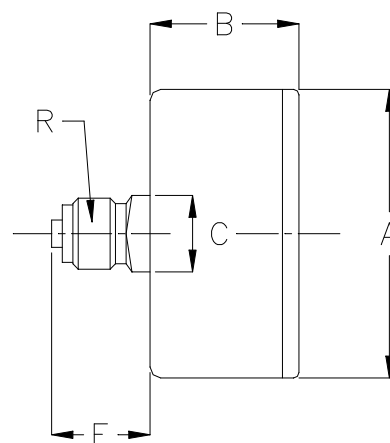
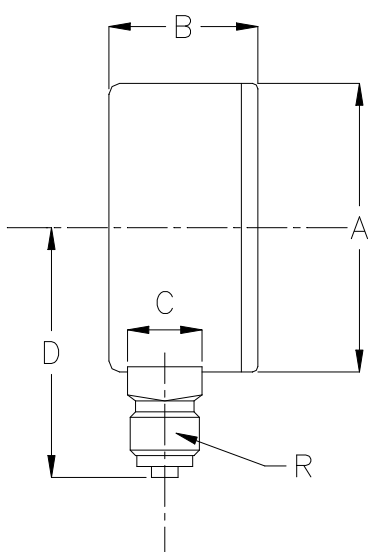
Golden case for different diameters



This publication does not try to establish the bases of a contract and the company keeps the right to modify without previous notice the design and the specifications of the instruments, in accordance with his politics of continued development.

**REGULATOR PRESSURE GAUGE
STANDARD EN 562
DN 40, 50 & 63**

DIMENSIONS



| LOWER CONNECTION TYPE | | | | | |
|-----------------------|------|----|-------|------|------|
| DN | A | B | C | D | R |
| 40 | 42 | 25 | 11x11 | 27,5 | 1/8" |
| 50 | 53 | 28 | 14x14 | 48 | 1/4" |
| 63 | 63,5 | 28 | 14x14 | 51 | 1/4" |

**DIMENSIONS
(mm)**

| BACK CONNECTION TYPE | | | | | |
|----------------------|------|----|-------|----|------|
| DN | A | B | C | E | R |
| 40 | 42 | 25 | 11x11 | 14 | 1/8" |
| 50 | 53 | 28 | 14x14 | 19 | 1/4" |
| 63 | 63,5 | 28 | 14x14 | 19 | 1/4" |

This publication does not try to establish the bases of a contract and the company keeps the right to modify without previous notice the design and the specifications of the instruments, in accordance with his politics of continued development.

Pol. Ind. "Gelidense" 3, nave 19 E-08790 Gelida Barcelona
Tf. +34 93 779 35 21 www.mei.es export@grupoheca.es