

## TEST PIPE PRESSURE GAUGE

### TEST PIPE PRESSURE GAUGE

Used with liquid or gaseous fluids that they do not attack chemically the copper alloys and they do not exhibit a high viscosity and do not crystallize.

Its preferred application is in pneumatic and hydraulic circuits, compressors, filters and pressure regulators. They comply with the CE standard.

#### Constructive and functional characteristics

**Accuracy:**

Ø50 class 1,6 according to EN 837-1.

**Ranges:** 0..4 bar for DN 63, for other diameters and ranges any other equivalent pressure or vacuum unit, please ask

**Ambient temperature:** -20...+60°C.

**Process fluid temperature:** max. +60° C.

**Temperature error:**

Additional error when the temperature of the sensitive element deviates from 20°C. +/- 0.3% every 10 °C of variation.

**Working pressure:**

Max. 75% of V.F.E.

**Temporary overpressure:** Not applicable

**Connection to process:** in brass

**Bourdon tube:**

Phosphorous bronze in "C" for scales 40 bar in spiral for scales > 40 bar.

**Case:** in plastic ABS.

**Window:** transparent plastic

**Mechanism:** In brass

**Pointer:** in black lacquered aluminum

**Other options:**

Welding in tin-silver alloy.

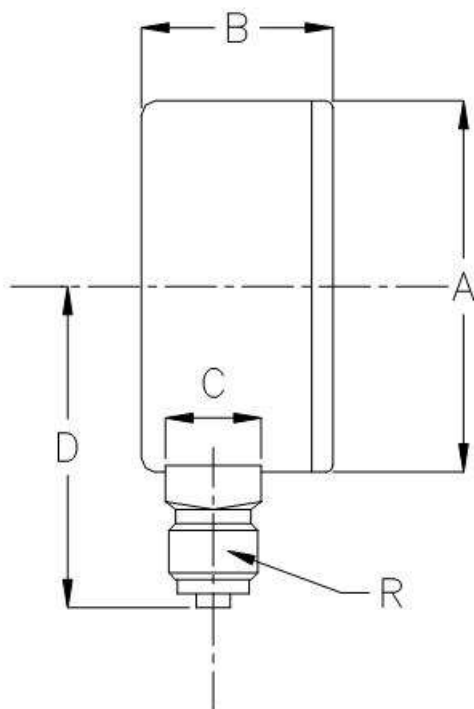
Other pressure ranges..



This publication does not try to establish the bases of a contract and the company keeps the right to modify without previous notice the design and the specifications of the instruments, in accordance with his politics of continued development.

**TEST PIPE PRESSURE GAUGE**

**DIMENSIONS**



DN	A	B	C	D	R
63	63.5	28	14x14	48	

(mm)

This publication does not try to establish the bases of a contract and the company keeps the right to modify without previous notice the design and the specifications of the instruments, in accordance with his politics of continued development.

**MEI Manometría e Instrumentación, s.l.**  
**Pol. Ind. "Gelidense" 3, nave 19 E-08790 Gelida Barcelona**  
**Tf. +34 93 779 35 21    www.mei.es    e-mail: export@grupoheca.es**